

Sliding hardware systems for foldable glass partition walls

HAWA-Variofold/Centerfold 80/GV



The elegant way to slide and fold glass walls

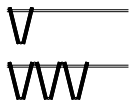
HAWA-Variofold 80/GV

HAWA-Centerfold 80/GV

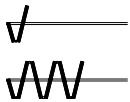
Attractive outlook for flexible, customised room partitions. The HAWA-Variofold 80/GV and the HAWA-Centerfold 80/GV fulfil virtually any wish with regard to designs for folding glass walls of up to 6 metres (19'8 $\frac{7}{32}$ ") in width. High space economy, impressive ease of installation and a perfect design that conceals hardware components within its profile are just some of the reasons why ever more folding walls in shopping malls, airports, hotels, restaurants or banks are unfolding their full potential with technology made by Hawa.

About the product

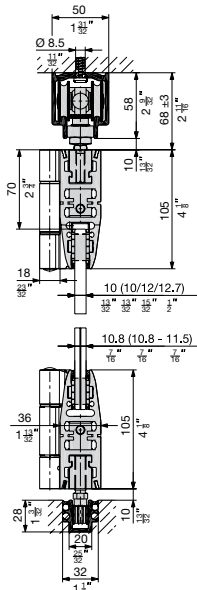
Easily folded, space-savily stacked. The HAWA-Variofold 80/GV leaves you the space to partition rooms flexibly with up to six door elements. Furthermore, the centrally suspended HAWA-Centerfold 80/GV has a practical omission: namely a floor-mounted guide, therefore enabling design options of particular appeal. Both hardware types hold many other benefits in store. These range from the trouble-free integration of locks and pivot or walk-through doors to exceptional running properties and quality of manufacturing.



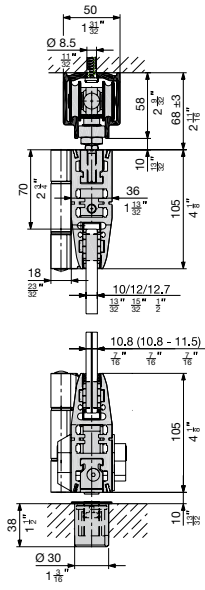
HAWA-Variofold 80/GV
Folding wall



HAWA-Centerfold 80/GV
Accordion partition



HAWA-Variofold 80/GV



HAWA-Centerfold 80/GV

Technical specifications

Max. door weight	80 kg (176 lbs.)
Max. door width	900 mm (2'11 $\frac{7}{16}$ ")
Max. door height	2600 mm (8'6 $\frac{3}{8}$ ")
Glass thickness	
ESG	10/12/12,7 mm ($\frac{13}{32}$ " / $\frac{15}{32}$ " / $\frac{1}{2}$ ")
ESG to VSG	10,8–11,5 mm ($\frac{7}{16}$ " / $\frac{15}{32}$ ")

At a glance

- Low space requirements thanks to a special hinge that draws doors close together.
- Elegant glass suspension profile with invisibly integrated technology.
- Easy installation without any adjustments to ceiling components.
- The opposite side can be equipped with a pivot door.
- Quiet, smooth movement.
- Closed door pairs are held in place by a folding/pivot door catch with an integrated and individually adjustable retainer.
- The HAWA-Centerfold 80/GV makes installations of up to 6 metres (19'8 $\frac{7}{32}$ ") in width possible both with and without a floor-mounted guide.

Further information:

Hawa AG
CH - 8932 Mettmenstetten
Switzerland
Tel. +41 44 767 91 91
Fax +41 44 767 91 78
www.hawa.ch



Available from specialist dealers