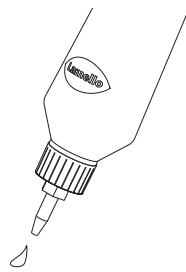




Tenso P-14

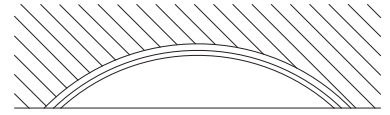
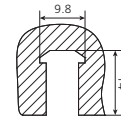
Pat. pend.



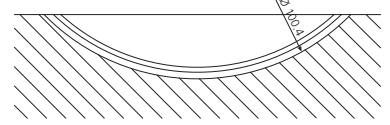
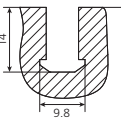
Paar/Pair/ Paire/Paio	Art. No.
80	145410
300	145420
1000	145431



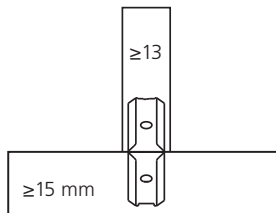
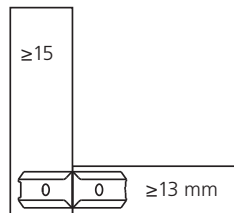
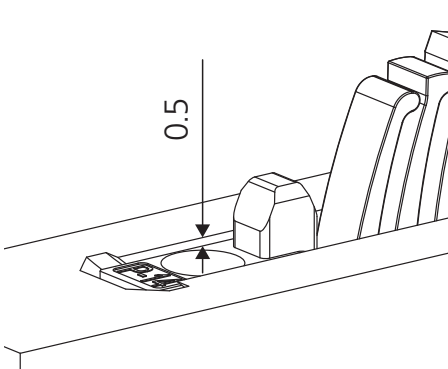
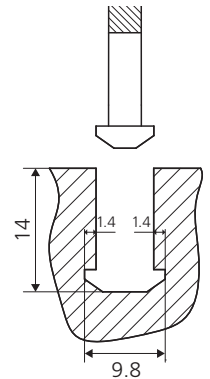
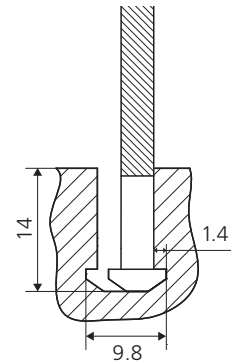
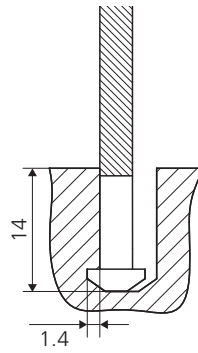
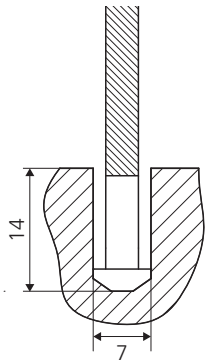
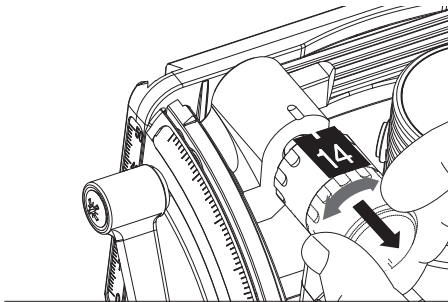
13.5 mm
6 mm



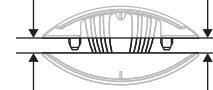
13.5 mm



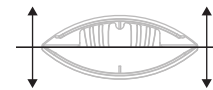
66 mm
D = 6.9/9.7 mm



Anzugskraft / Tensile Force: 15 kg



Haltekraft / Retention Force: 25 kg

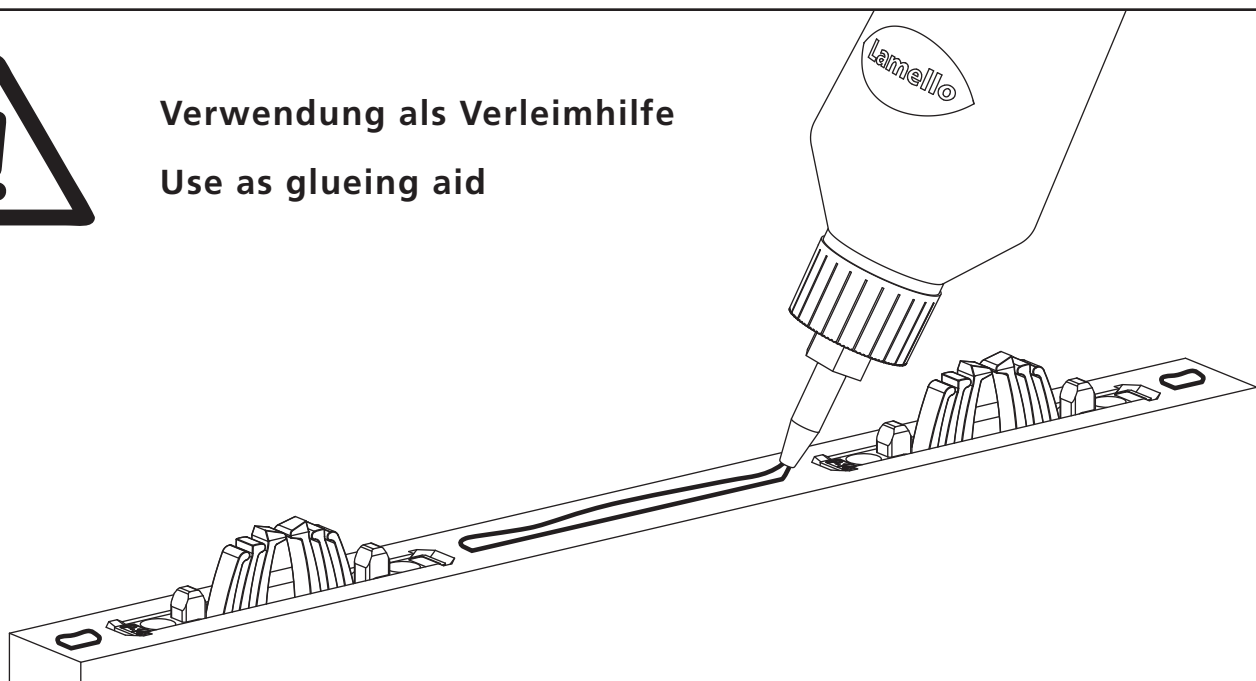


Hiweis: Probe-verbinder mit Bisco P-15 möglich
Tip: Sample joining with Bisco P-15 possible

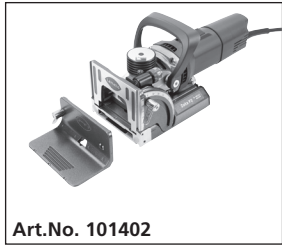


Verwendung als Verleimhilfe

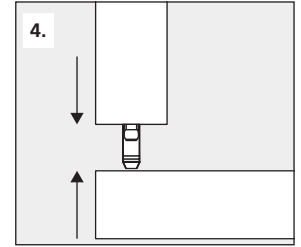
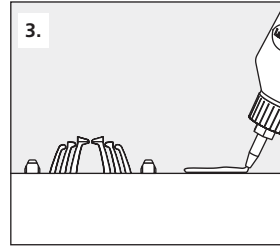
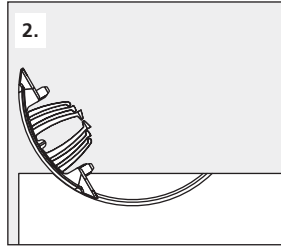
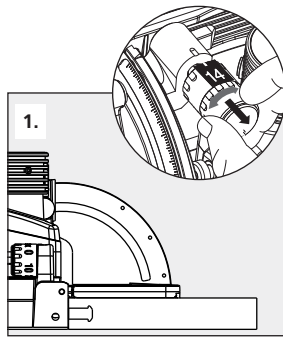
Use as glueing aid



Zeta P2



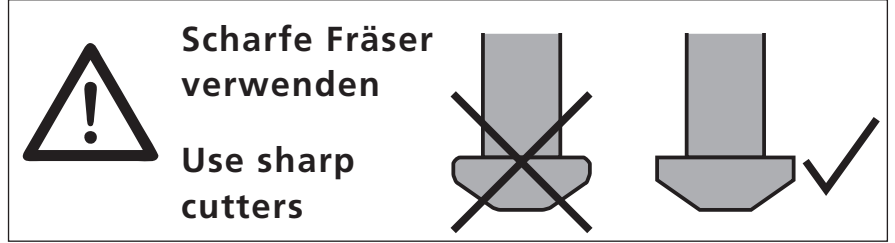
Art.No. 101402



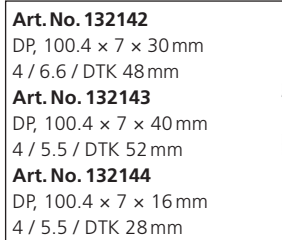
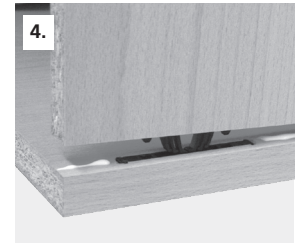
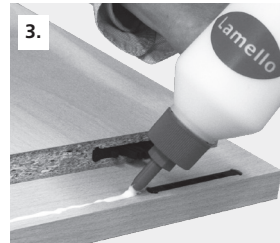
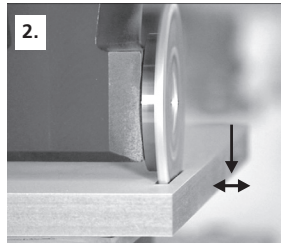
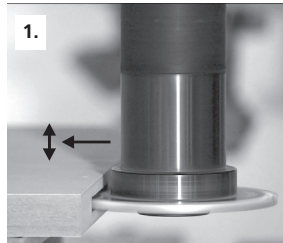
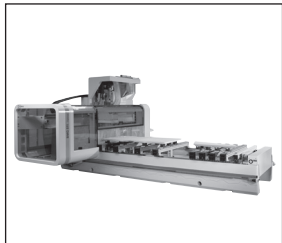
Art.No. 132140 (Diamant)
DP, Ø 100.4 x 7 x 22 mm



Art.No. 132141
HW, Ø 100.9 x 7 x 22 mm



CNC



Art. No. 132142
DP, 100.4 x 7 x 30 mm
4 / 6.6 / DTK 48 mm

Art. No. 132143
DP, 100.4 x 7 x 40 mm
4 / 5.5 / DTK 52 mm

Art. No. 132144
DP, 100.4 x 7 x 16 mm
4 / 5.5 / DTK 28 mm



Art. No. 132150
20 x 50, L = 102 mm

Art. No. 132151
25 x 60, L = 102 mm

Art. No. 132152
16 x 50, L = 85 mm

Art. No. 132153
16 x 55, L = 68 mm



Lamello AG
Verbindungstechnik
Hauptstrasse 149
CH-4416 Bubendorf
Tel. +41 61 935 36 36
Fax +41 61 935 36 06
info@lamello.com
www.lamello.com

Partner network: www.lamello.com

TensoP-14 08/13 Art.-Nr. 9881700V5

Clamex P-Medius 15/10



Paar / Pair / Paire / Paio	Art. No.
80	145377
300	145378

Clamex P-15



Paar / Pair / Paire / Paio	Art. No.
80	145337
300	145342
1000	145352

Bisco P-15



Stück / piece / pièce / pezzi	Art. No.
80	145301
300	145302
1000	145303

Clamex P-10



Paar / Pair / Paire / Paio	Art. No.
80	145382
300	145383
1000	145384

Bisco P-10



Stück / piece / pièce / pezzi	Art. No.
80	145304
300	145305

