

Hardware system for stackable wood sliding walls with flexible track routing

HAWA-Variotec 150/H



Wood sliding walls can be so variable and convenient

HAWA-Variotec 150/H

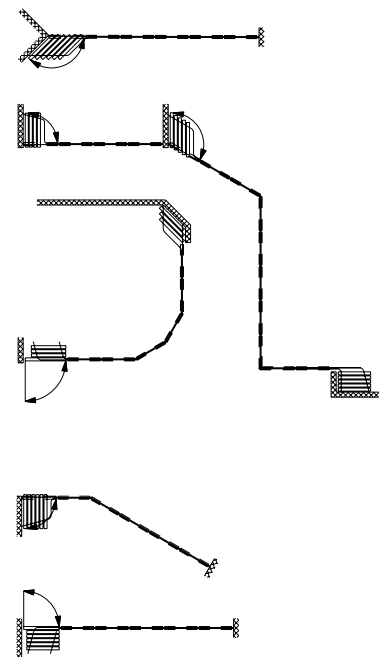
The HAWA-Variotec 150/H is and always will be the curving star among sliding hardware for wood elements. After all, its qualities are still seminal in this day and age, even though the first unit was launched a long time ago. They start with its modular, pluggable track system that no room situation can throw off course, and continue through to its attractive design and outstanding running properties. Together they make this hardware a very elegant solution for high-quality room partitions and privacy screens, for instance in hotels, restaurants, banks or administration buildings.

About the product

Whether straightforward design ideas or intricate constructions: things will always go smoothly with the HAWA-Variotec 150/H. Its plain anodised, pluggable straight top tracks and prefabricated curved sections of 15, 30, 45, 60, 75 and 90 degrees will always put you on track to finding the right solution for any door weighing up to 150 kg (330 lbs.). All the more so considering that even made-to-measure curvature radii are available on request. Everything else runs smoothly with this hardware, too: it is the epitome of smooth running thanks to its quality trolley with two-point guide wheels, it needs a pleasingly small amount of space in the stacking area, and its many accessories leave no design wish unfulfilled. Despite all this sophisticated technology it remains a totally uncomplicated partner when it comes to installation.



Whether office or living room:
sliding convenience fits in everywhere.



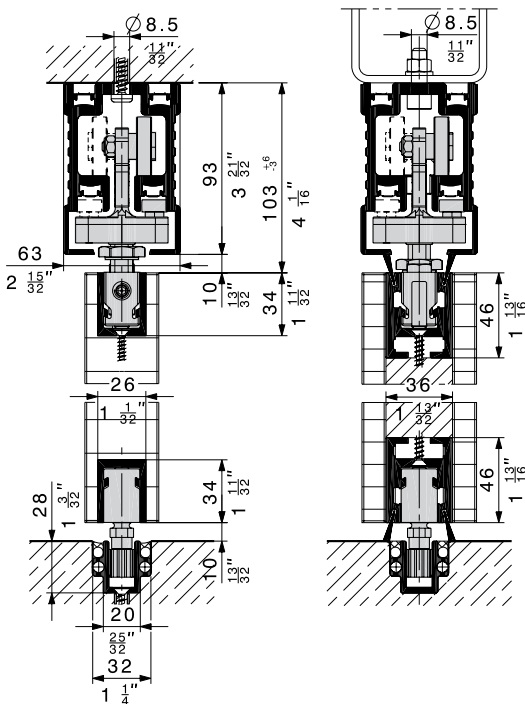
The HAWA-Variotec 150/H goes along
with any change in direction.

At a glance

- Perfect curve technology thanks to a modular track system that permits directional changes from 15° to 90°.
- Top tracks and bottom guide channels can be bent to customer specifications to enable the most intricate floor plan designs.
- Different rollers to accommodate door weights up to 70, 100 and 150 kg (154, 220 and 330 lbs.).
- Installations are possible with and without bottom guide channels.
- Low space requirements in the stacking area.
- Broad range of accessories available.
- LGA-certified top quality.

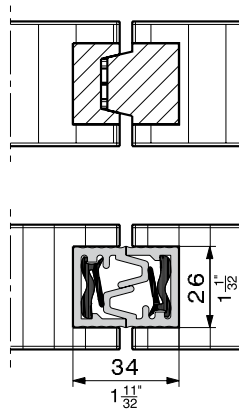
Technical specifications

Max. door weight	150 kg (330 lbs.)
Max. door height	4000 mm (13'1½")
Higher installations on request	
Vertically adjustable	+6/-3 mm (+¼"/-⅛")
Minimum axis radius	4000 mm (13'1½")

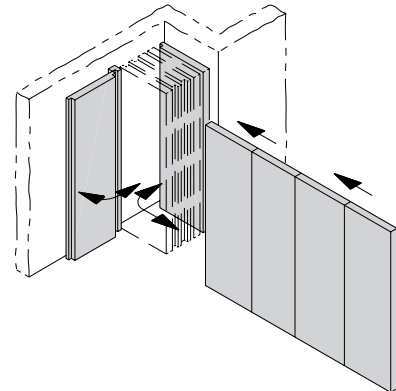
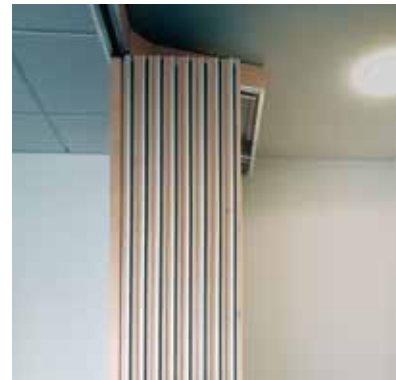


Version without brush profile.

Version with brush profile.



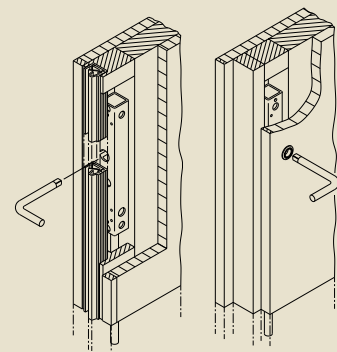
The system permits the use of vertical seals.



If only one could park everything in such a small space.



HAWA-Doorfix, the ideal double-turn bar bolt lock for closing, guiding and immobilising sliding doors; the lock's pushrod moves down into the locking strike plate or the bottom guide channel.



Available through certified partners

Further information:

Hawa AG
CH- 8932 Mettmenstetten
Switzerland
Tel. + 41 44 767 91 91
Fax + 41 44 767 91 78
www.hawa.ch

