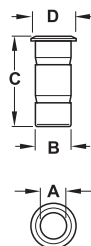


Dust excluding socket

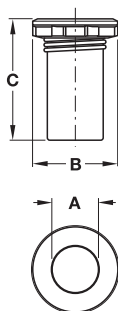


- Area of application: For flush bolts as alternative to striking plate, prevents dirt settling in the bolt aperture
- Material: Brass
- Version: Bolt aperture from Ø 9 – 20 mm

Dim. A mm	Dim. B mm	Dim. C mm	Dim. D mm	Nickel plated	Bright
up to 9	Ø 13	36	17	911.62.060	911.62.061
up to 11	Ø 15	36	19	911.62.062	911.62.063
up to 13	Ø 17	36	21	911.62.064	911.62.065
up to 15	Ø 19	36	26	911.62.066	911.62.067
up to 20	Ø 25	40	35	911.62.068	911.62.069

2

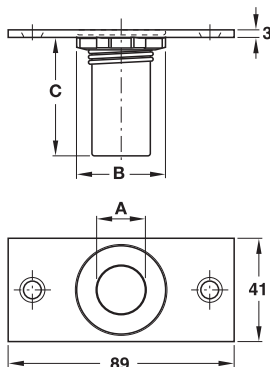
Dust excluding socket



- Area of application: For flush bolts as alternative to striking plate, prevents dirt settling in the bolt aperture
- Material: Brass
- Version: Bolt aperture up to Ø 19 mm, spring force suits semi automatic/fully automatic flush bolts

Dim. A mm	Dim. B mm	Dim. C mm	Chrome plated matt
up to 19	Ø 37	48	911.62.070

Dust excluding socket



- Area of application: For flush bolts as alternative to striking plate, prevents dirt settling in the bolt aperture
- Material: Brass
- Version: Bolt aperture up to Ø 19 mm, spring force suits semi automatic/fully automatic flush bolts

Dim. A mm	Dim. B mm	Dim. C mm	Chrome plated matt	Polished
up to 19	Ø 27	45	911.62.072	911.62.073

DGH-B-INT 2016, HDE-en, 03/16; Dimensional data not binding. We reserve the right to alter specifications without notice.