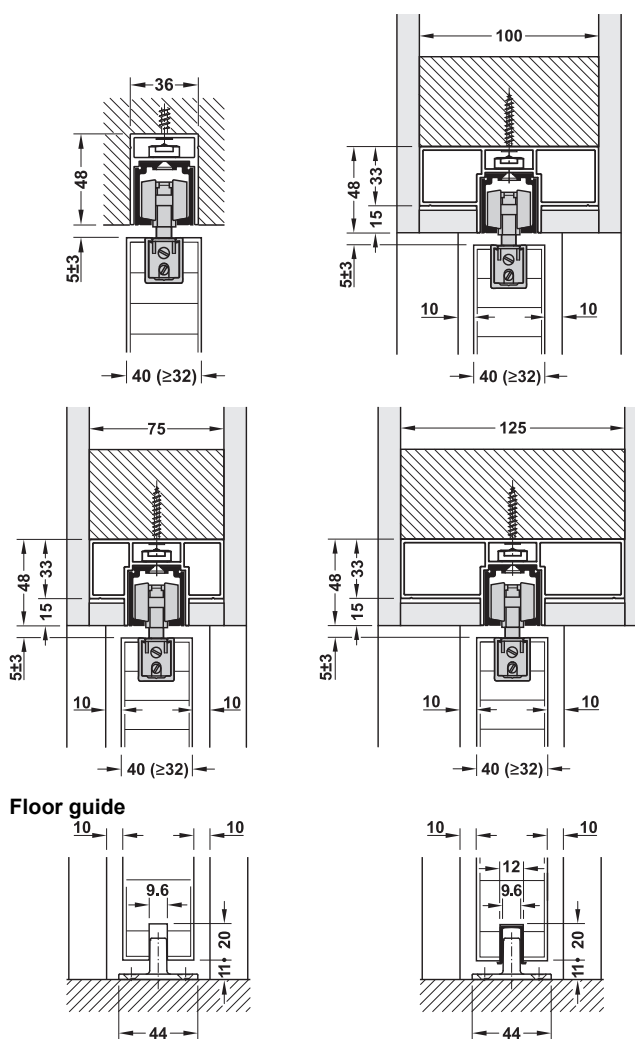
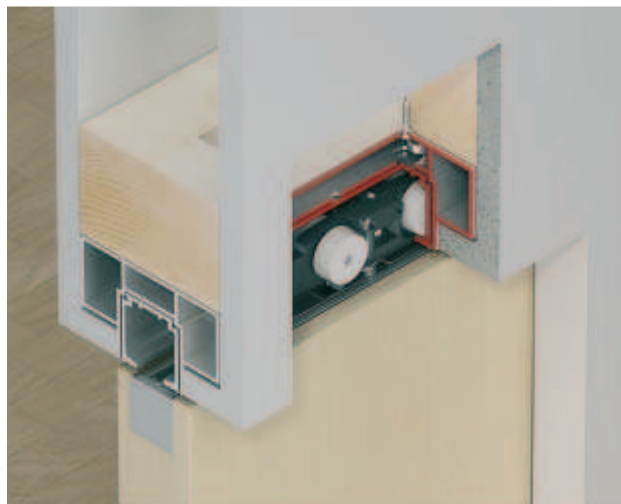


Classic Running track set for wall pocket solution

For Classic 40-I to 120-I sliding door fittings



Floor guide

Without guide track

With guide track

Note

Construction wood is not necessarily required with track width 75, 100 or 125 mm as the mounting rail can be screwed directly to the wall cladding (depending on the cladding material).



- > Area of application: For internal wall pocket widths 75, 100 or 125 mm, wall pocket width optional when using doubling panels, integrated ceiling installation
- > Functionality: Running track can be removed after installation without wall opening, running gear and soft and self closing mechanism can also be removed, stopper position inside wall pocket can be adjusted after installation

7

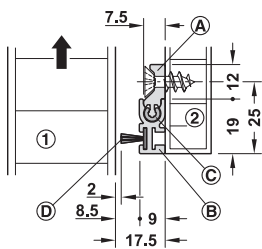
		Area of application	Material	Finish/colour	Dim. (W x L) mm	Effective length mm	Cat. No.
Track set for wall pocket installation, consists of running track and mounting rail, with floor guide, plastic, grey		For door weights 40–120 kg	Aluminium	Silver coloured anodized	36 x 2000	1980	940.43.280
					36 x 2500	2480	940.43.281
					36 x 3000	2980	940.43.282
					75 x 2000	1980	940.43.291
					75 x 2500	2480	940.43.292
					75 x 3000	2980	940.43.293
					100 x 2000	1980	940.43.294
					100 x 2500	2480	940.43.295
					100 x 3000	2980	940.43.296
					125 x 2000	1980	940.43.297
125 x 2500	2480	940.43.298					
125 x 3000	2980	940.43.299					
Floor guide		–	Plastic	Grey	–	–	940.42.038
Guide track, bottom, for press fitting		–	Plastic	Black	–	1000	940.42.050
					–	1500	940.42.051
					–	2000	940.42.052
Sample box for wall pocket solution	–	–	–	–	–	–	732.06.925

→ Brush seal set for wall pocket solution

	Supplied with		Material	Finish/colour	Length mm	Cat. No.			
Brush seal set, for wall pocket solution	1 brush seal 1 brush profile 1 mounting profile Mounting clips (number in accordance with length)		Aluminium	Silver coloured anodized	2000	940.42.420			
					2500	940.42.421			
					3000	940.42.422			
							Matt powder coated, pure white, RAL 9010	2000	940.42.430
								2500	940.42.431
								3000	940.42.432

Order reference

Order 1 set for each side.



- Ⓐ Mounting profile
 - Ⓑ Fascia profile
 - Ⓒ Mounting clips
 - Ⓓ Brush seal
-
- ① Door leaf
 - ② Cladding

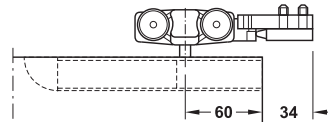
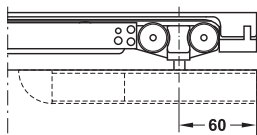
Installation

Pre-mount mounting profile Ⓐ on cladding ②, slide brush seal Ⓓ onto fascia profile Ⓑ and press-fit into mounting profile using mounting clips Ⓒ. Mounting clips Ⓒ are attached at individual points along the length.

Application matrix for wall pocket solution

Prerequisite: The wall pocket is in the centre of the masonry.
Door widths: 670–1,470 mm

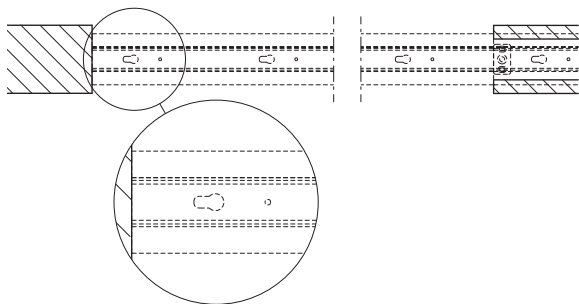
Internal opening mm	Door protrusion into the pocket mm	Total door width mm	Door thickness mm	Pocket width mm	Gap between door and pocket (left side and right side) mm	Masonry thickness (with frame, if applicable) mm
650–700	20	670–720	32–42	52–62	10	80–140
701–800	20	721–820	32–42	52–62	10	80–170
801–1000	20	821–1020	32–42	52–62	10	80–200
1001–1200	20	1021–1220	32–42	52–62	10	80–260
1201–1450	20	1221–1470	32–42	52–62	10	80–320



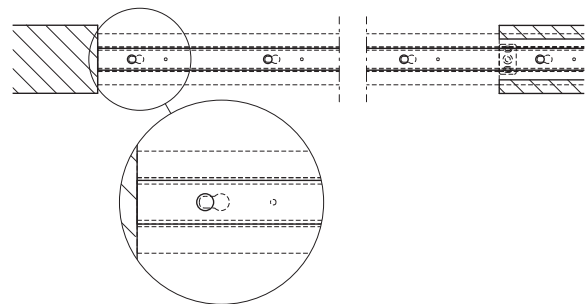
Note

Dimension from door edge to centre of suspension point or pivot point must be adhered to!
This is required for swivelling the door into the wall pocket!

Installation situation

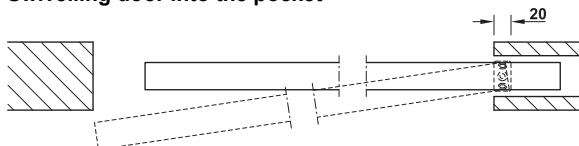


Mounting rail installation: Observe the position of the recesses!



The running track is always clipped-in in direction of the locking point. The running track is secured with screws around the opening area.

Swivelling door into the pocket



Additional set track stopper

▶ AH 7.42

DGH-B-INT 2017, HDE-en, 01/17; Dimensional data not binding. We reserve the right to alter specifications without notice.

Sliding Door Fittings for Wooden Doors